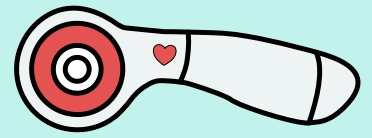
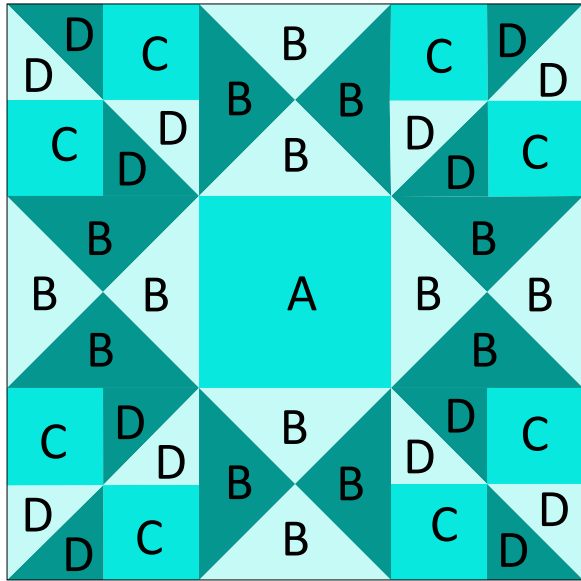


Inflorescence Designs



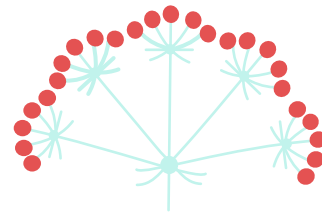
12" Finished Ohio Star Variation



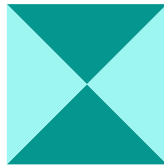
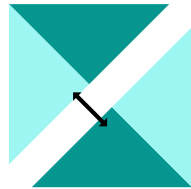
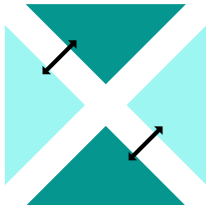
A scant 1/4 inch seam for best results

Cutting Supplies:

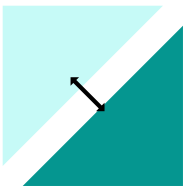
- (A) 4 1/2" Crafter's Edge square die
- (B) 4 1/2" Crafter's Edge quarter square triangle die
- (C) 2 1/2" Crafter's Edge square die
- (D) 2 1/2" Crafter's Edge half square triangle die



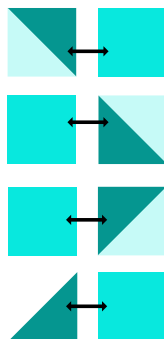
Assembly...



Make 4 Quarter Square Triangles



Make 8 Half Square Triangles



Make 2 Units

Make 2 Units

