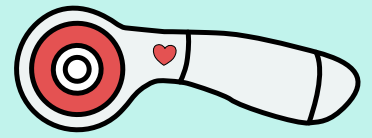
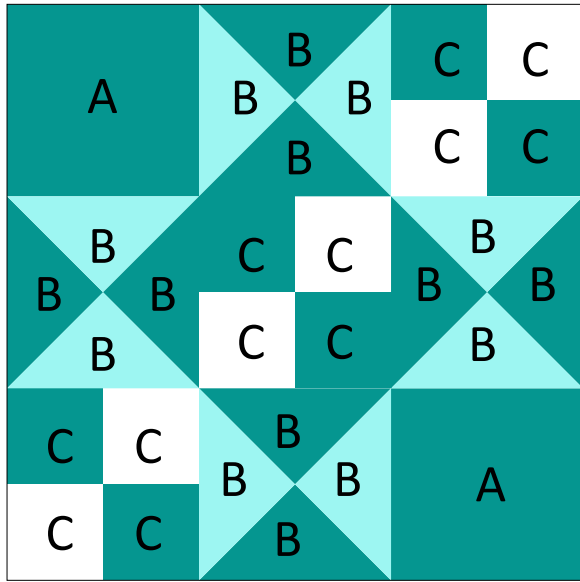


# Inflorescence Designs

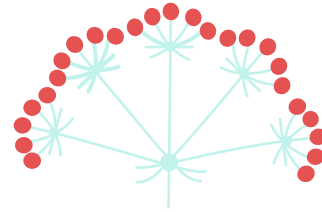


## 12" Finished Ohio Star Variation



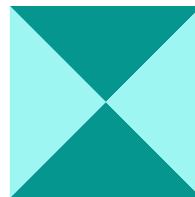
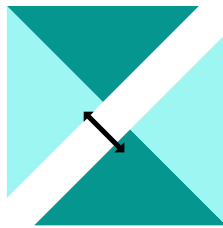
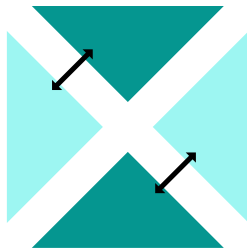
### Cutting Supplies:

- (A) 4 1/2" Crafter's Edge square die
- (B) 4 1/2" Crafter's Edge quarter square triangle die
- (C) 2 1/2" Crafter's Edge square die

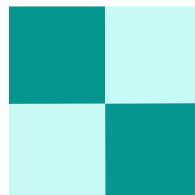
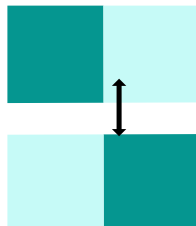
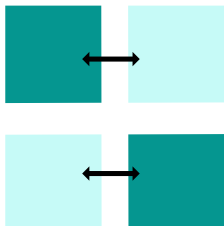


A scant 1/4 inch seam for best results

### Assembly...



Make 4 Quarter Square Triangles



Make 3 Units

