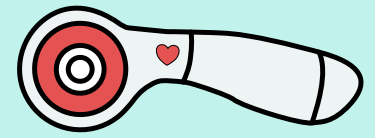
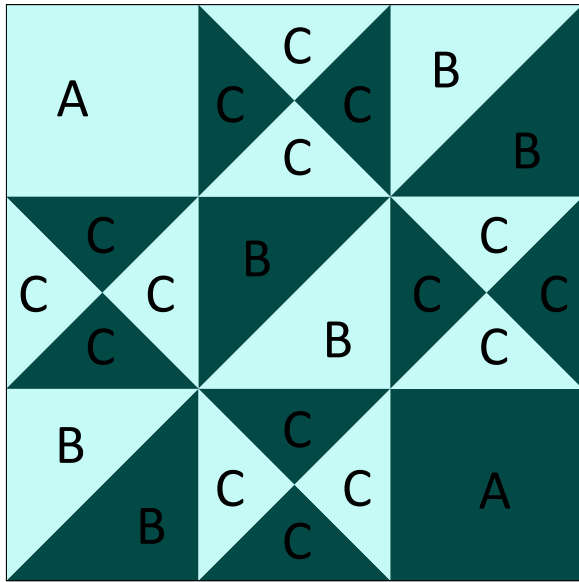


# Inflorescence Designs



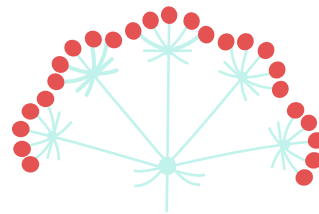
## 12" Finished Ohio Star Variation



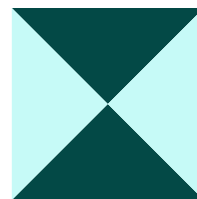
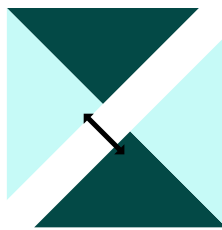
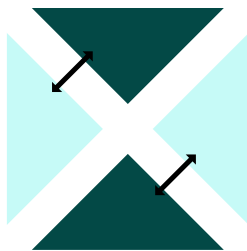
A scant  $\frac{1}{4}$  inch seam for best results

### Cutting Supplies:

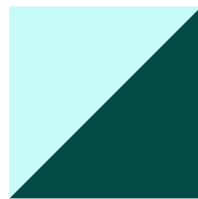
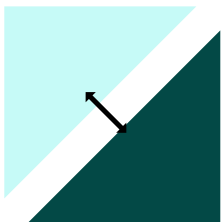
- (A) 4 1/2" Crafter's Edge square die
  - (B) 4 1/2" Crafter's Edge half square triangle die
  - (C) 4 1/2" Crafter's Edge quarter square triangle die
- 2 Coordinating Fabrics (One light and one dark work really well for this design)



### Assembly...



Make 4 Quarter Square Triangles



Make 3 Half Square Triangles

