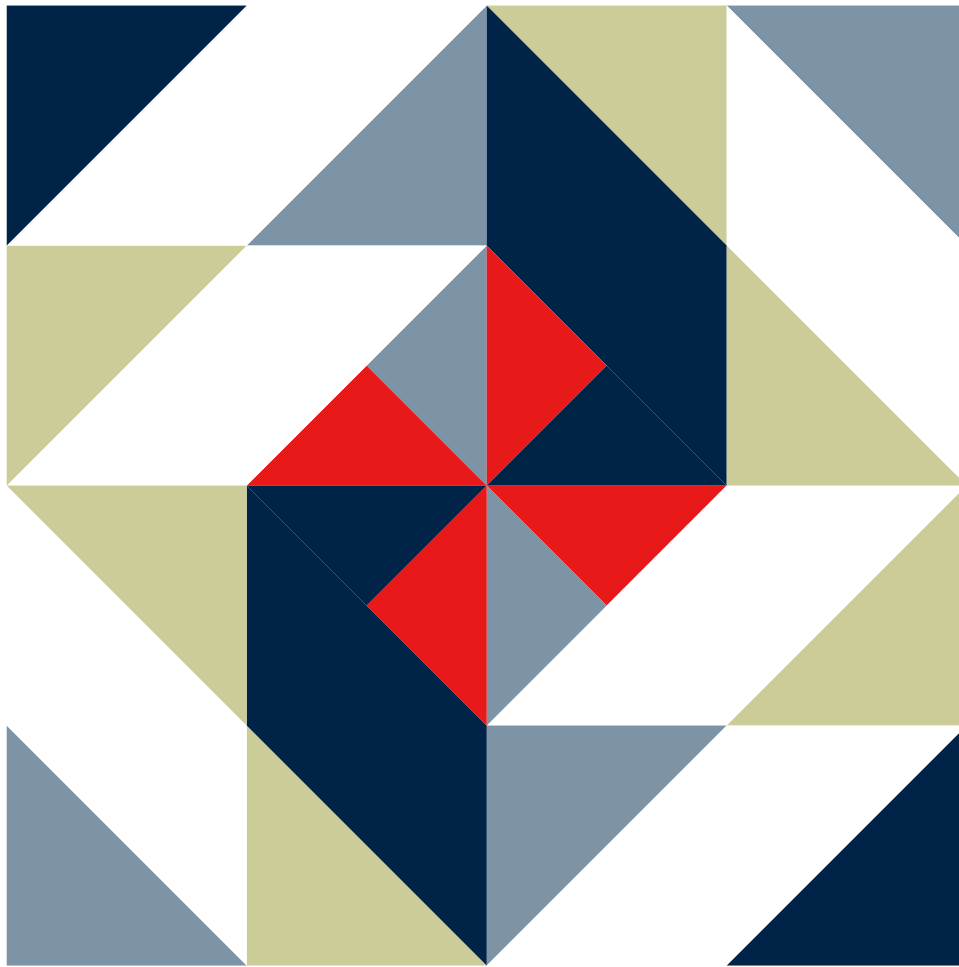
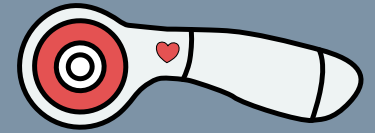


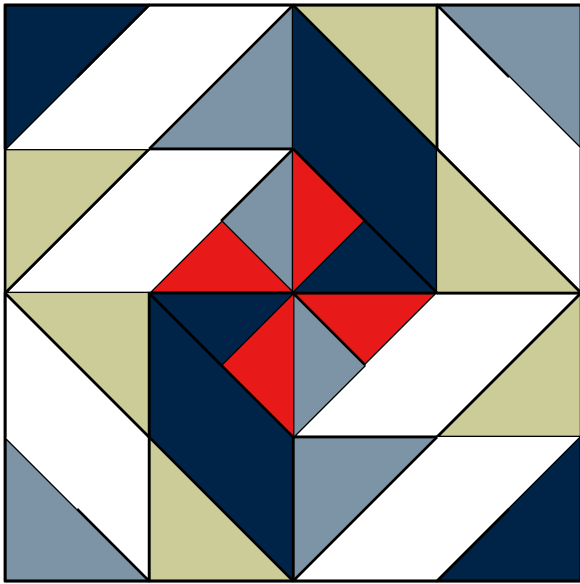
Inflorescence Designs



Whirl & Twirl Quilt Block

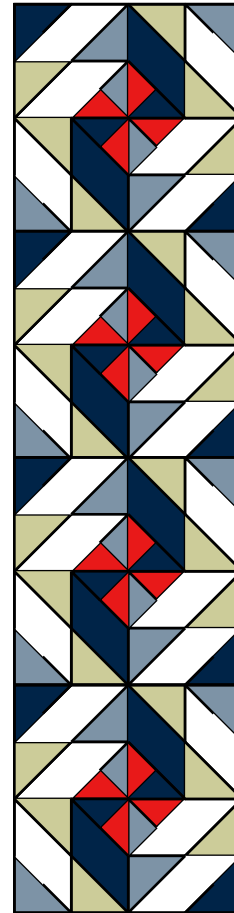
Finished Block Size: 16"

*A Quilt block pattern and
tutorial designed by Julia
Schweri for Crafter's Edge TM*



Whirl & Twirl

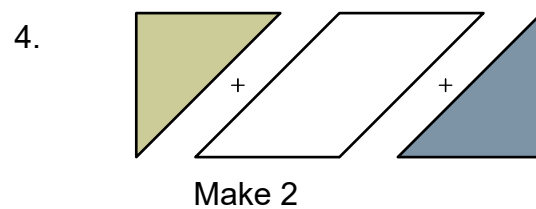
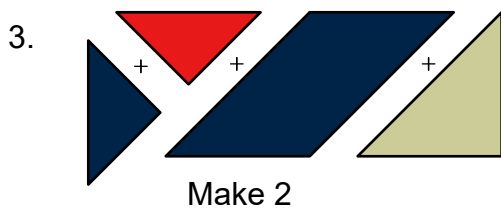
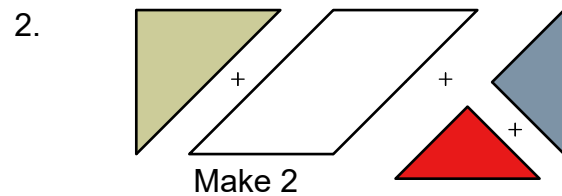
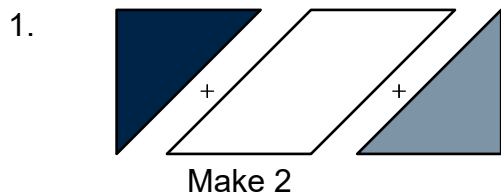
Quilt Block Tutorial



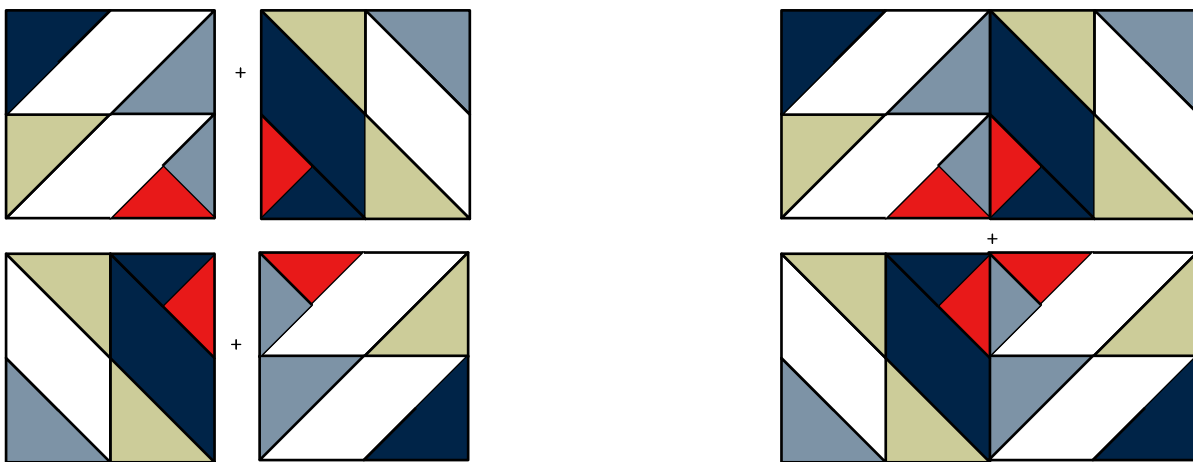
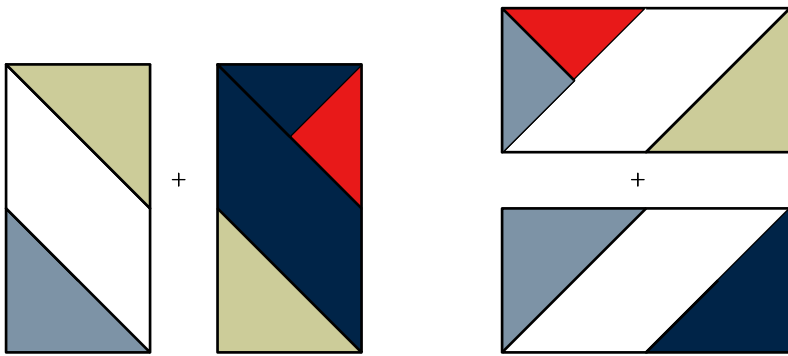
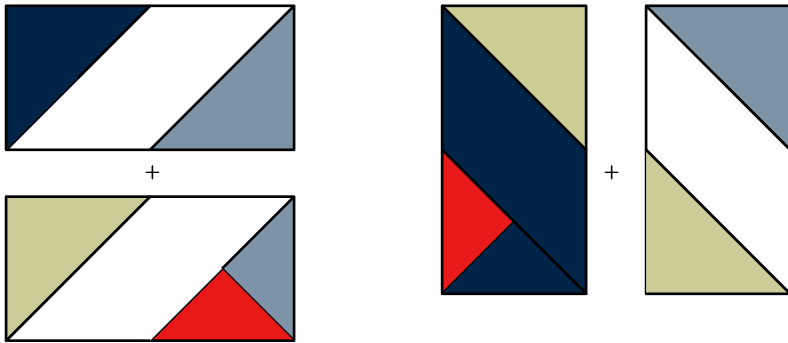
Fabric Cutting of ONE BLOCK Using Crafter's Edge Crossover II: *(To make the runner multiply these numbers by 4)*

- (6) 4 1/2" parallelogram in white
- (2) 4 1/2" parallelogram in dark blue
- (4) 2 1/2" quarter square triangle in red
- (2) 2 1/2" quarter square triangle in light blue
- (4) 4" half square triangle in light blue
- (6) 4" half square triangle in gray
- (2) 4" half square triangle in dark blue

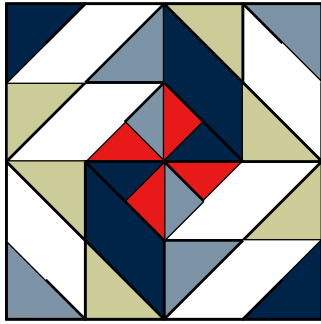
Piece Assembly:



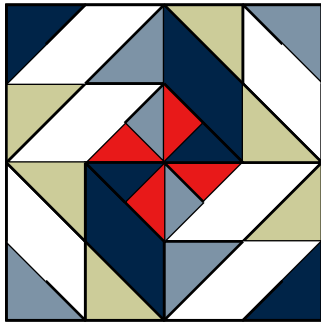
Block Assembly:



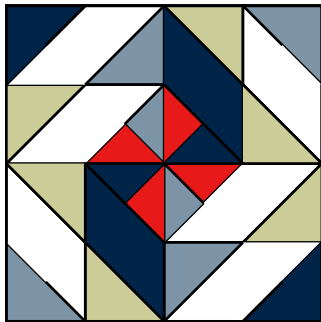
Runner Assembly:



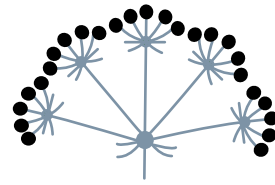
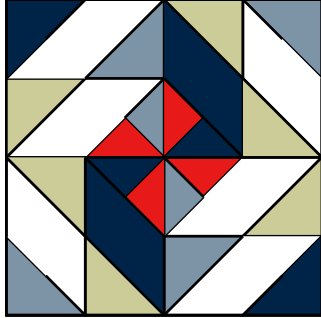
+



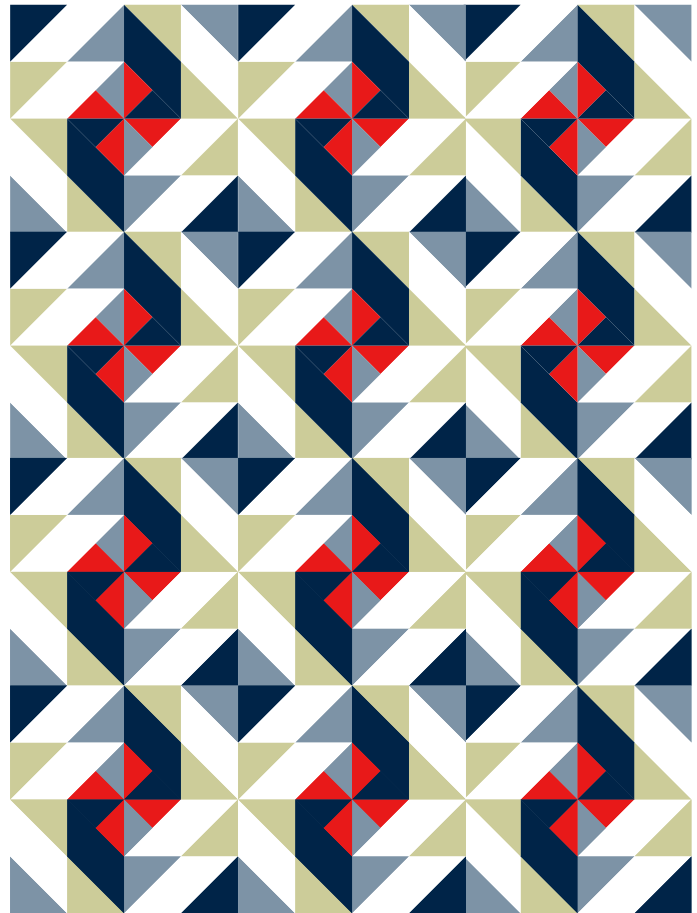
+



+



Starting to Bloom
by
Inflorescence
Designs



How neat does this look as a quilt! The quilt pictured above would measure 64"x 48" and uses only 12 blocks.