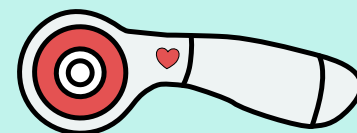


# Inflorescence Designs



Pattern is for the center quilt block. The photo shows a finished project.

## Flamingo Dog Quilt Block

Foundation Paper Piecing  
Finished Block Size: 12"

[www.inflorescencedesigns.com](http://www.inflorescencedesigns.com)

## Helpful Tips:

- When printing the pattern, make sure it is printing to "Actual Size" or with "no scaling". Check that the 1 INCH marker is true to size.
- Shorten your stitch length. This will make the paper easier to tear off and help prevent you pulling your stitches loose.
- Make sure you cover all of the seam allowances with your fabric.
- Use the color coded sections to help determine the color of each fabric section.
- Back stitch at the starts and ends of each line to keep your fabric secure while you remove the paper.
- Press each segment as you add it.
- Take your time, follow the directions, but most of all, have fun! Happy sewing!

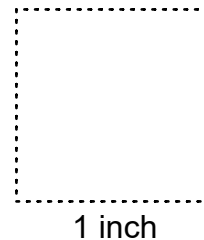
Please do not copy or redistribute this pattern in any form. You may sell items made from this pattern on a small scale. They must be handmade by you, not mass produced. If you sell online, please include "Pattern designed by Julia of Inflorescence Designs" within the description and if possible a link to the pattern.

Any questions? Feel free to contact me at [inflorescencedesigns@yahoo.com](mailto:inflorescencedesigns@yahoo.com)

## Pattern Assembly:

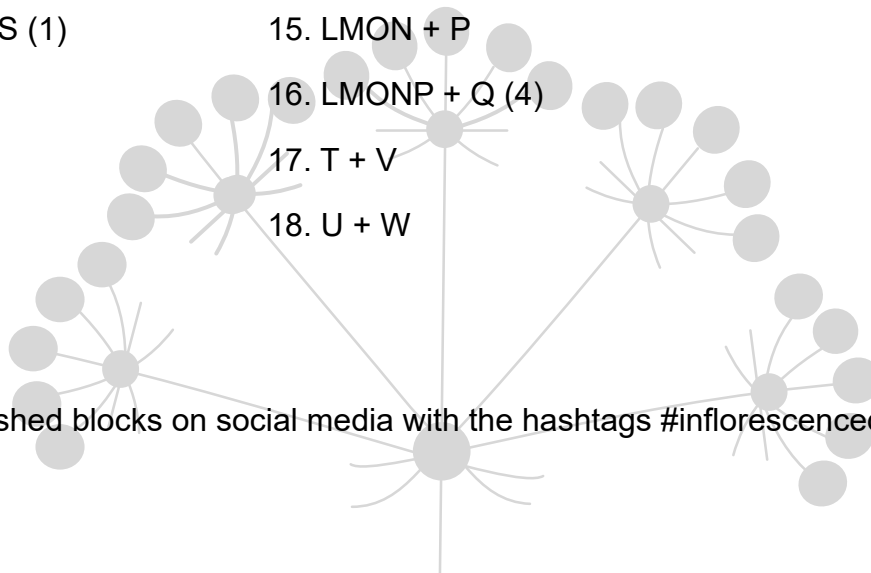
Join sections together in the following order:

- |                     |                   |                 |
|---------------------|-------------------|-----------------|
| 1. B + C            | 10. ABC + GH (3)  |                 |
| 2. A + BC           | 11. 1 + 2 + 3     |                 |
| 3. E + F            | 12. L + M         |                 |
| 4. J + K            | 13. LM + N        | 19. TV + UW (5) |
| 5. R + S            | 14. LMN + O       | 20. 123 + 4 + 5 |
| 6. EF + JK + RS (1) | 15. LMON + P      |                 |
| 7. D + I (2)        | 16. LMONP + Q (4) |                 |
| 8. 2 + 1            | 17. T + V         |                 |
| 9. G + H            | 18. U + W         |                 |



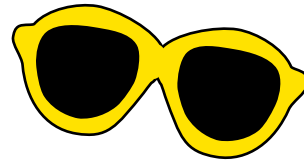
## Social Media:

Share your finished blocks on social media with the hashtags #inflorescencedesigns, #flamingodog

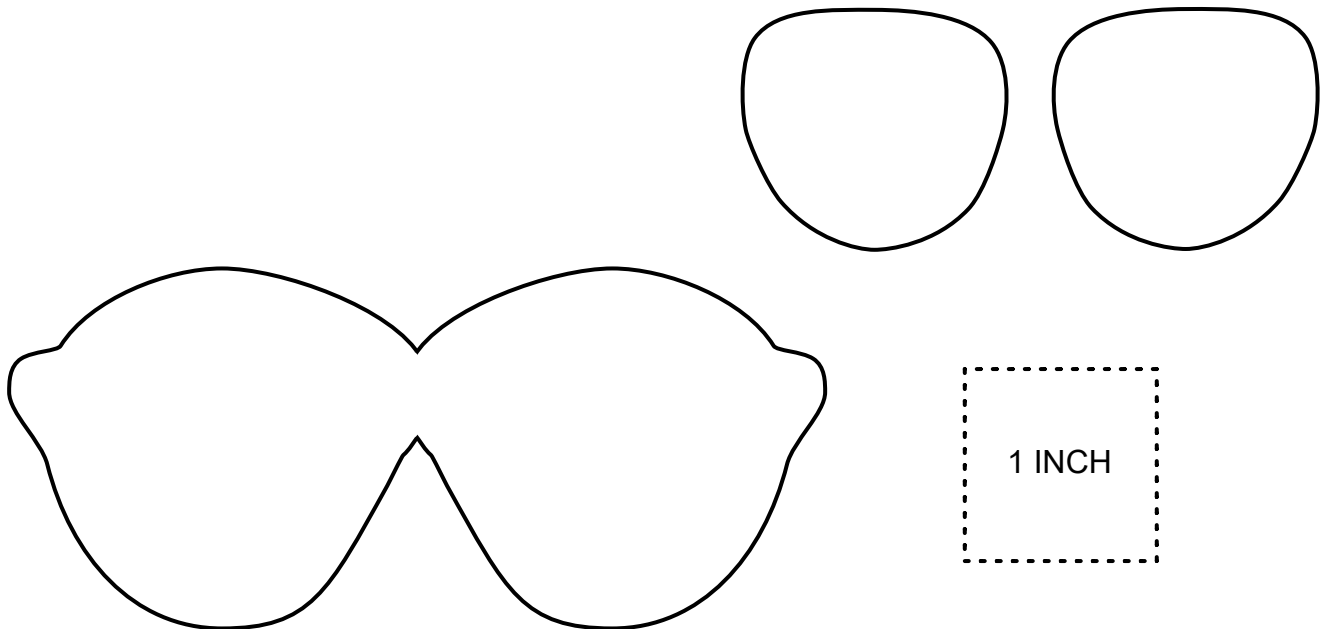


## Applique Sunglasses, nose and mouth:

1. Fuse fabric to double sided adhesive using the manufactures instructions.
2. Trace and cut out applique pieces.
3. Iron fabric to quilt block.
4. Applique using a blanket, zigzag or satin stitch.
5. Attach the dog's safety nose and flamingo eye or applique/embroider to quilt block.
6. Embroider the mouth of the dog.



For more inspiration, or instructions on how to make an 18" pillow cover, visit:  
[www.inflorescencedesigns.com](http://www.inflorescencedesigns.com)



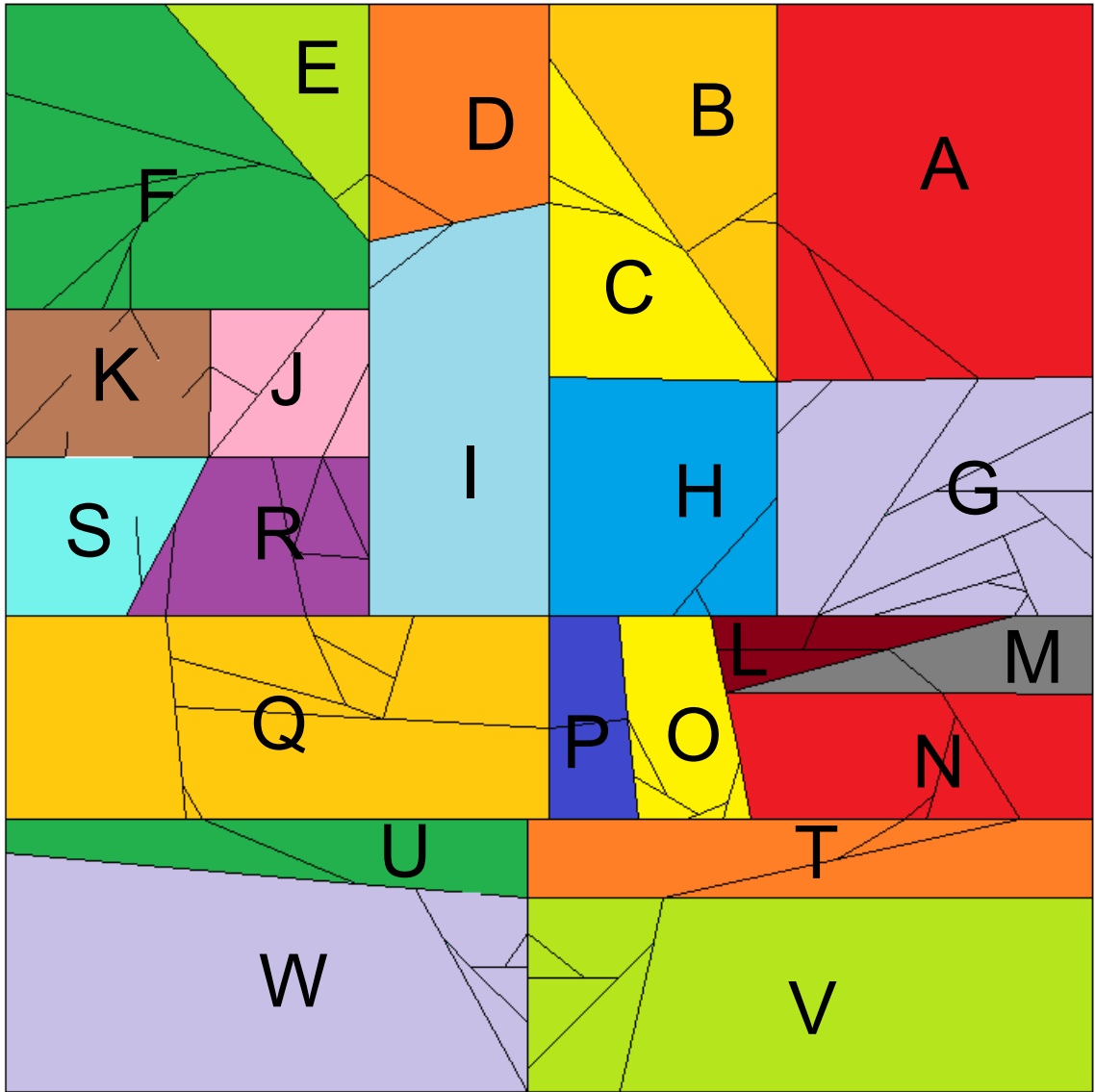


IMAGE IS MIRRORED FOR LAYOUT

