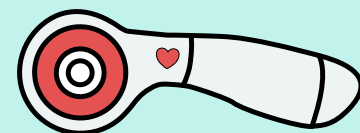


# Inflorescence Designs



The pattern is only for the cicada  
quilt block and the year 2021, not  
the finished quilt.

## Brood X Quilt Blocks

*Foundation Paper Piecing & Embroidery*

**Cicada Finished Block Size: 10"**

**Numbers Finished Block Size: 2.5" each**

[www.inflorescencedesigns.com](http://www.inflorescencedesigns.com)

## Helpful Tips:

- When printing the pattern, make sure it is printing to "Actual Size" or with "no scaling". Check that the 1 INCH marker is true to size.
- Shorten your stitch length. This will make the paper easier to tear off and help prevent you pulling your stitches loose.
- Make sure you cover all of the seam allowances with your fabric.
- Use the color coded sections to help determine the color of each fabric section.
- Back stitch at the starts and ends of each line to keep your fabric secure while you remove the paper.
- Press each segment as you add it.
- Take your time, follow the directions, but most of all, have fun! Happy sewing!

**TERMS OF USE:** This pattern is free for your personal & non-profit use ONLY. Patterns are not to be used for distribution, resale or manufacture. That means no selling the patterns themselves, physical projects made using these patterns (including but not limited to: commissions, custom work, no selling on Etsy, Ebay, craft shows, etc), or for-profit classes using these patterns. By downloading/printing these patterns, you agree to these terms.

## Pattern Assembly:

Join sections together in the following order:

### Cicada

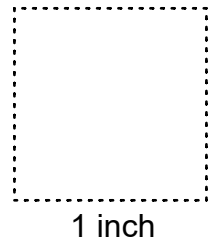
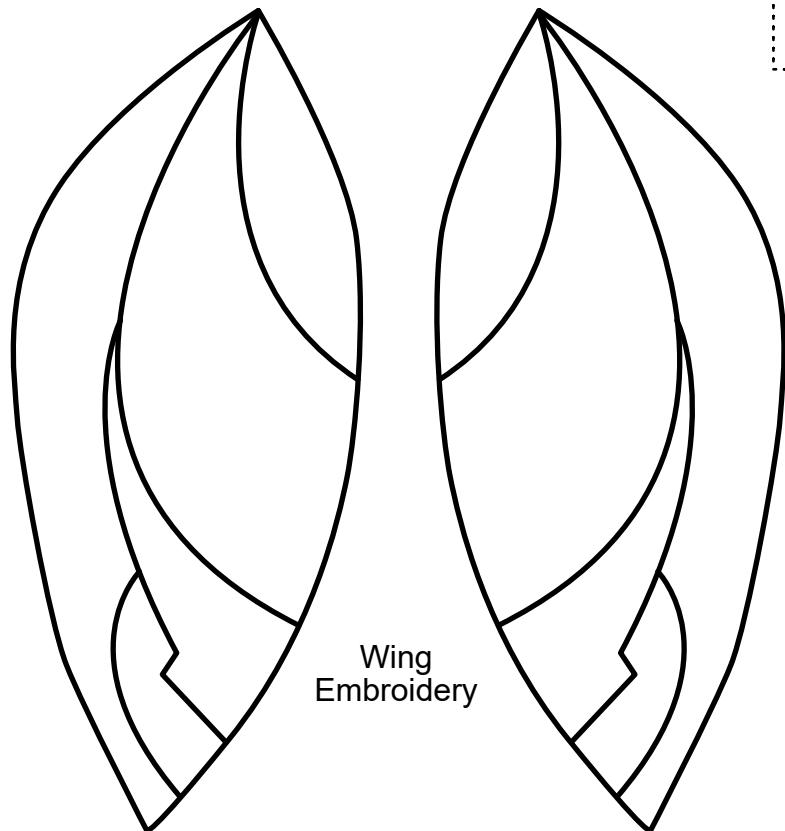
1. A + B
2. C + D
3. E + F
4. G + H + I + J
5. AB + CD + EF + GHIJ

### Number 2:

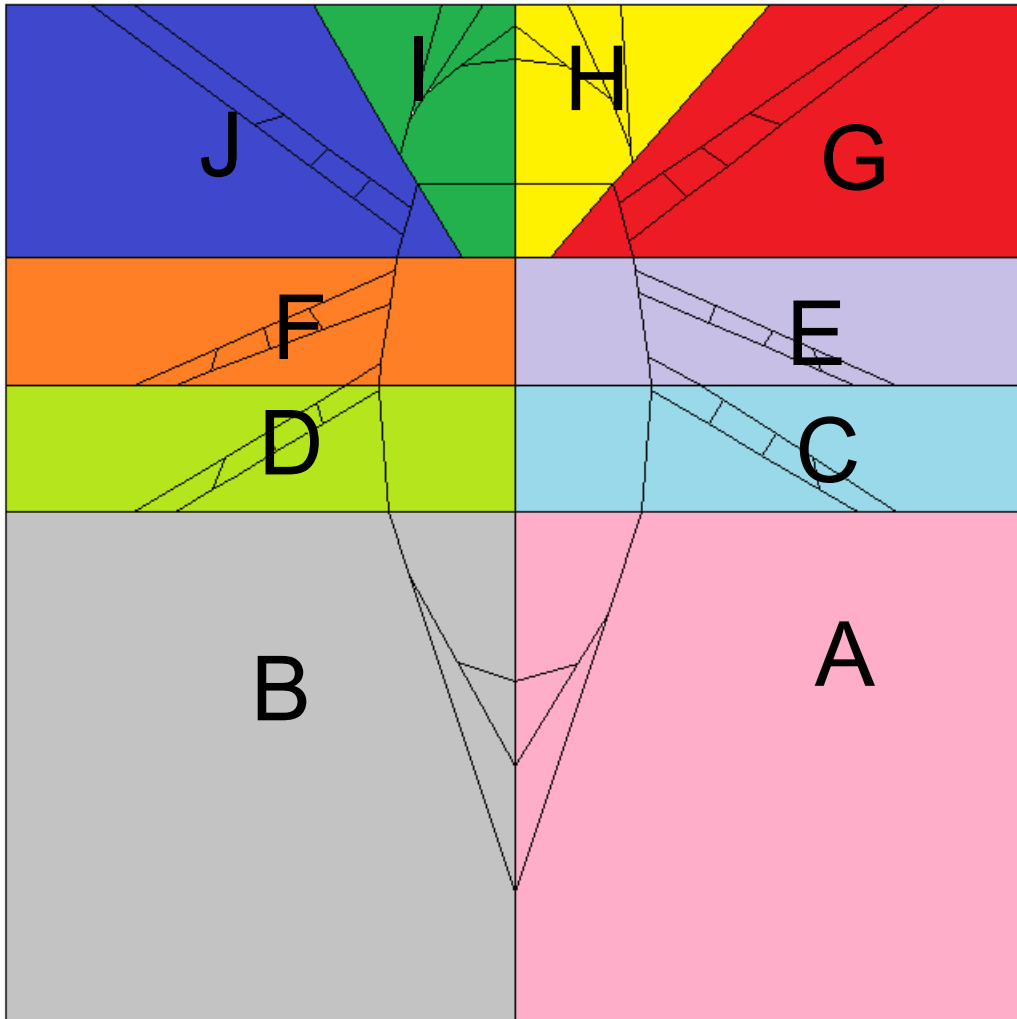
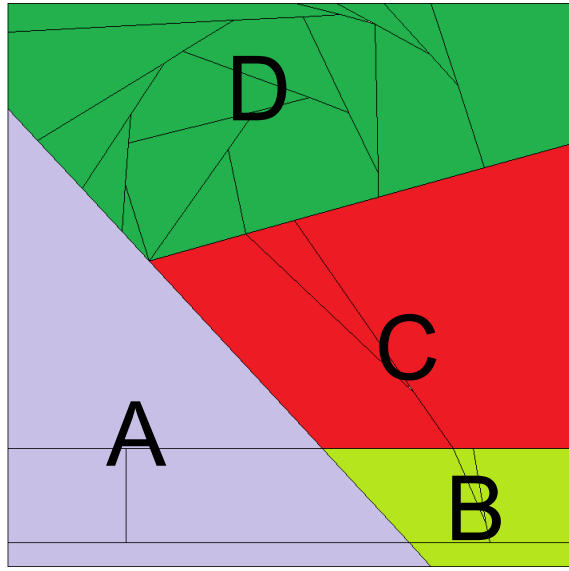
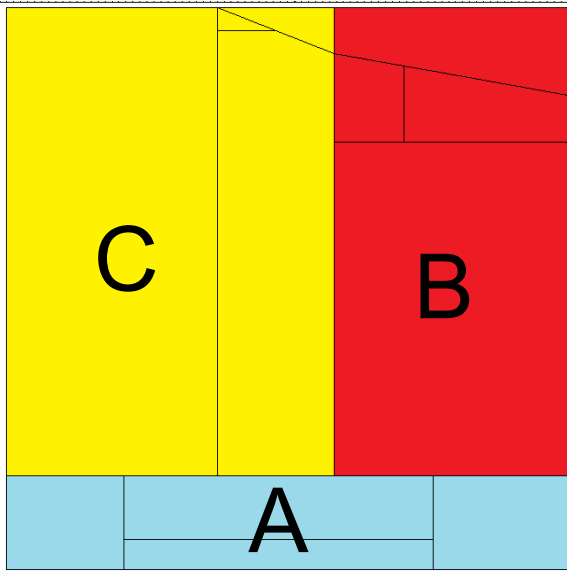
1. B + C
2. BC + D
3. BCD + A

### Number 1:

1. B + C
2. BC + A

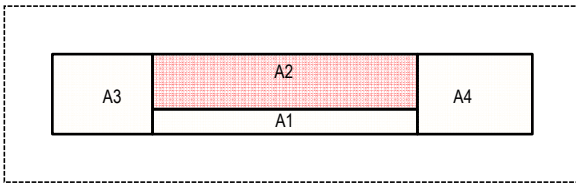
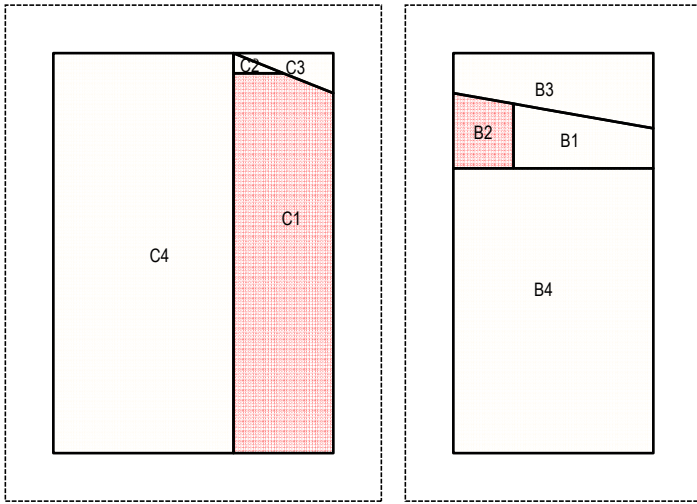


1 inch

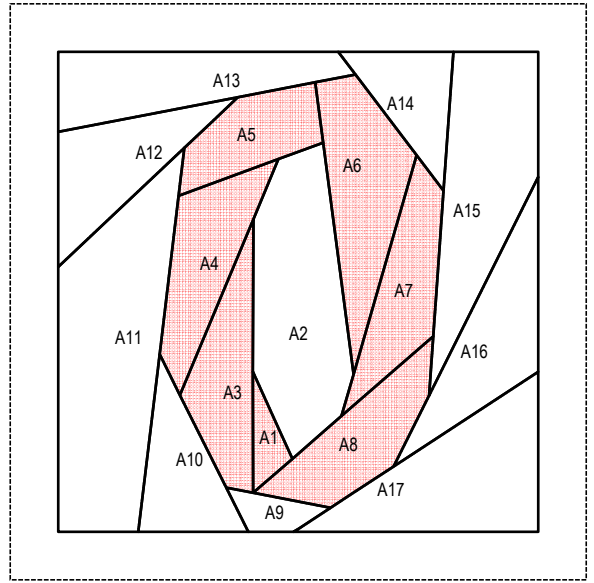


Images mirrored for layout.

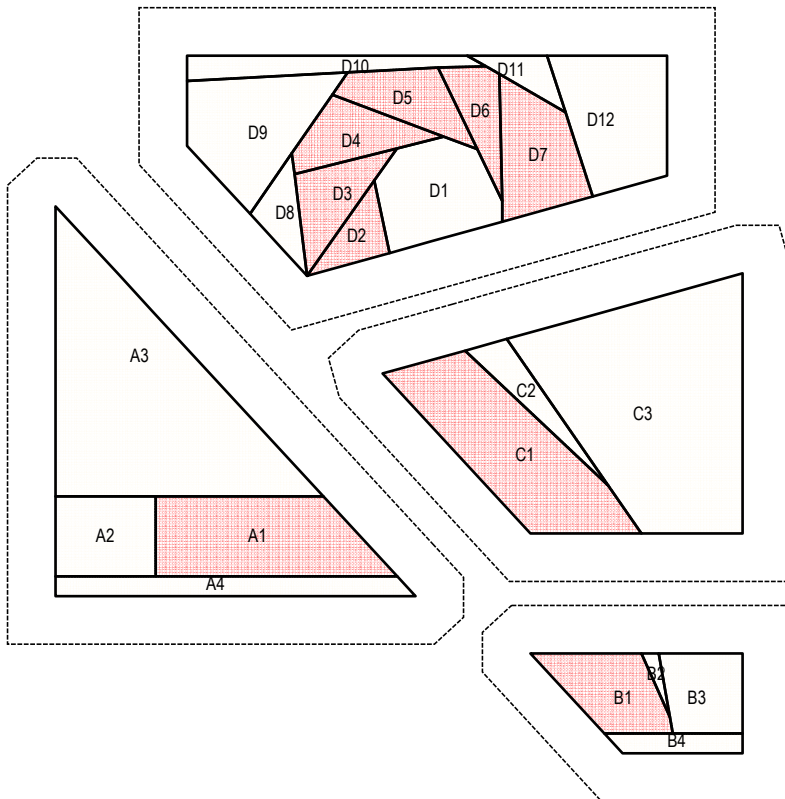
NUMBERS:



ONE



ZERO



1 inch

TWO

